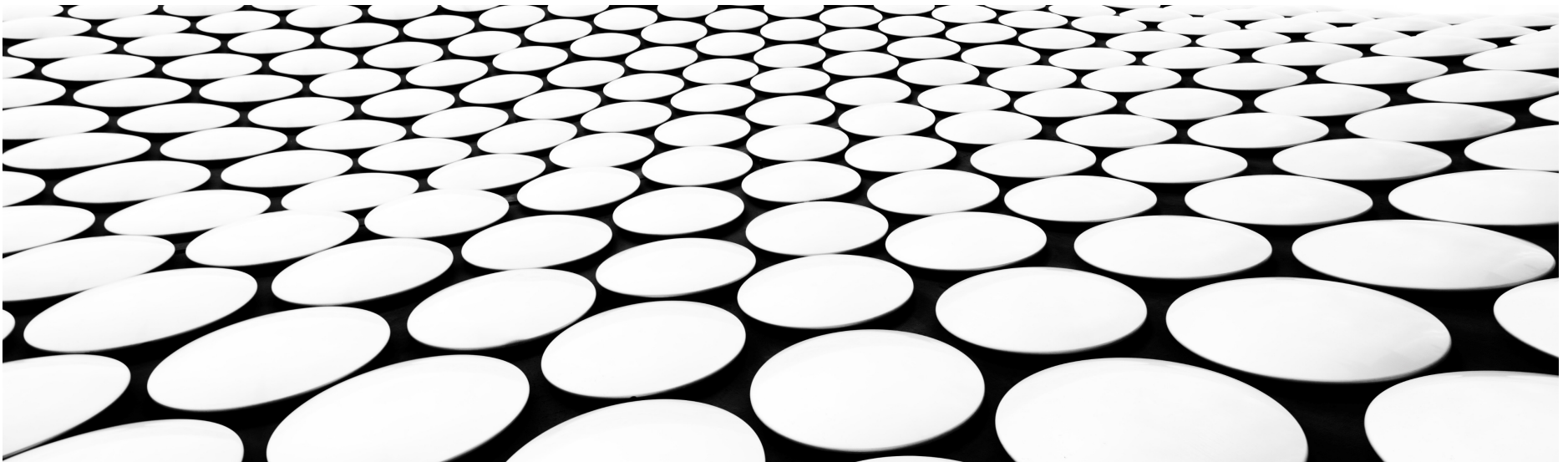

CHALLENGES AND SOLUTIONS TO ANNUAL MSHA REFRESHER TRAINING

NICOLE PLATT 2022 MAA ANNUAL CONFERENCE



TRAINING CHALLENGES

- COVID-19 Exposure
 - Social Distancing
- Memory Retention
 - Within one hour, people will have forgotten an average of 50 percent of the information you presented



SOLUTION

MODIFY IN-PERSON ANNUAL 8 HOUR TRAINING

01

Utilize larger rooms to allow everyone to maintain 6-feet between themselves and other participants at all times

02

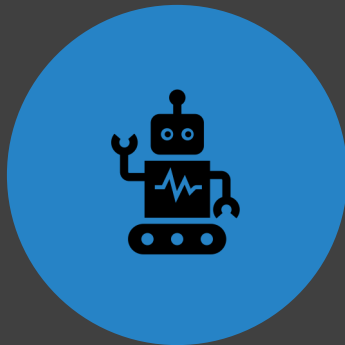
Limit hands on training in topics such as first aid and CPR

03

Provide assigned seats and personal items for each trainee

SOLUTION

SELF PACED ONLINE TRAINING



COMPANIES SUCH AS 360TRAINING.COM,
CATAMOUNT, AND MICHIGAN TECH
UNIVERSITY CAN PROVIDE SELF PACED
ONLINE TRAINING



CERTIFICATES ARE SENT ONCE
ALL COURSES ARE
COMPLETED

SOLUTION

VIRTUAL ONLINE TRAINING



Companies such as AIS and Michigan Tech University can provide instructor led online training



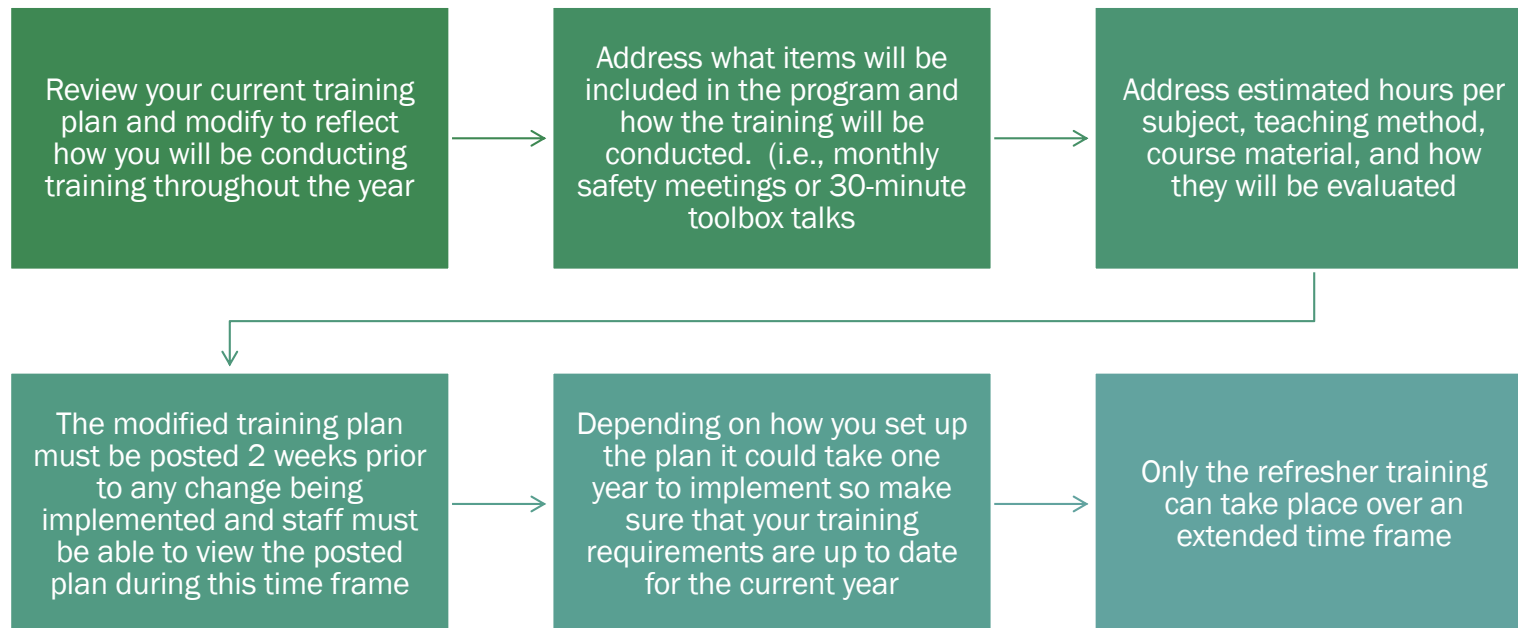
Certificates are sent once all courses are completed

IN PERSON TRAINING VS ONLINE LEARNING

- In-Person Training Provides More Hands-on Experience
- In-Person Training Allows Several Employees to Learn at the Same Pace
- In-Person Training Provides Greater Face to Face Interaction
- Online Training Offers Greater Flexibility
- Online Training is Often Less Expensive

SOLUTION

DIVIDE THE ANNUAL TRAINING INTO SEGMENTS



SOLUTION

DIVIDE THE ANNUAL TRAINING INTO SEGMENTS

Provide

- Provide training material for all topics that are include in your training plan

Capture

- Capture attendance for each meeting by utilizing a sign-in sheet; include location, date, time, length, and subject of training covered

Create

- Create Refresher Certificates on an annual basis using the sign-in sheet data; ensure all employees have received a minimum of 8 Hours

January Compliance Checklist

**NOTE: Reviewer initials after the monthly requirements have been completed. Once complete, place original in monthly training folder.*

MONTHLY PROGRAM REQUIREMENTS

Initial After Completion

_____ **Monthly Topic – Hand and Power Tool Safety**

_____ Sign-In Sheet

Describe any addition information provided to employees or inspected:

MONTHLY INSPECTION REQUIREMENTS

_____ Monthly Safety Condition Checklist packet includes:

- ☐ Fire Extinguisher
- ☐ Eye Wash
- ☐ Ladder
- ☐ Grinder
- ☐ Air Compressor
- ☐ Emergency Stops
- ☐ ARC Flash Gloves
- ☐ Pull Cords
- ☐ Electrical

Monthly Safety Meeting Sign-In Sheet

Location of Meeting:

Date/Time:

Length of Meeting:

Subject of Training Session:

Trainer:

[illegible]

ANNUAL REFRESHER TRAINING RECORD/CERTIFICATE

Miner's Full Name (Print) Bill Murray

Mine or Contractor Name/ID# Mine or Contractor Name/ID# Nowhere #20-00000

Subject 30 CFR Part 46.8	Subject Length	Date	Competent Person (Full Name)	Location of Training (Name & Address if Institution)	Miner's Initials
<i>Each miner received no less than 8 hours of annual refresher training in the following:</i>					
Instruction on changes at the mine that could adversely affect the miner's health and safety.	15 Minutes	4.15.2021	Billy Boy	Nowhere	
<i>For recommended subjects see 46.8 c</i>					
Hand and Portable Power Tools	2 Hours	1.21.2021	Billy Bob	Nowhere	
Burning and Cutting Safety	2 Hours	2.15.2021	Billy Bob	Nowhere	
Conveyor Safety	2 Hours	3.28.2021	Billy Bob	Nowhere	
Stockpile Safety	2 Hours	4.15.2021	Billy bob	Nowhere	

False certification is punishable under section 110(a) and (f) of the Federal Mine Safety and Health Act. I certify that the above training has been completed

(Signature of person responsible for health and safety training)

(Date)

SOLUTIONS

DIVIDE THE ANNUAL TRAINING INTO SEGMENTS



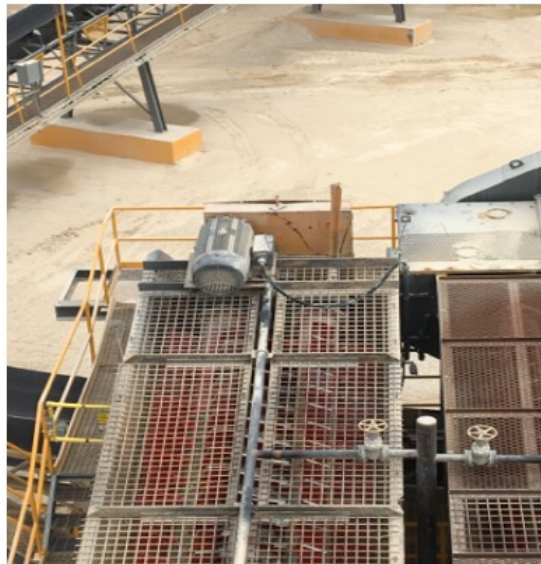
IMPROVE EMPLOYEE PARTICIPATION

- Group Activities
 - Fatal Gram Reviews
 - Safety Jenga
 - Safety Jeopardy
 - Hazard Identification
 - Kahoot

FATAL GRAM REVIEWS

FATALGRAM #2

METAL/NONMETAL MINE FATALITY - On March 7, 2019, a 46-year-old contractor with three years of experience was fatally injured when he lost his balance and fell backwards through a narrow gap between two log washers and landed on a cable tray approximately 12 feet below. The victim was changing drive belts on a log washer motor when his wrench slipped off a bolt he was tightening, causing the loss of balance.



FATALGRAM #2

In your group, write out a short description of what you think happened here.

- How do you think the accident happened?
- What prevention measures should have been taken?

After a discussion and explanation of the above, answer the next questions.

- What are the physical causes of the injuries (caught between, fall to below or to the same level, contact by such as electrocution, etc.)?
- If you are the first person on the scene, how would you make it safe?

List some injuries you may find and the appropriate first aid measures.

-
-

Was the incident caused by mine conditions, machine failure, human failure, or a combination of two or more of these? Please explain your answer.

What are some best practices that should be followed when working from heights?



SAFETY JENGA

SAFETY JEOPARDY

JEOPARDY!

Electrical	Powered Haulage	Defensive Driving	Ground Control	Conveyors	Various
<u>100</u>	<u>100</u>	<u>100</u>	<u>100</u>	<u>100</u>	<u>100</u>
<u>200</u>	<u>200</u>	<u>200</u>	<u>200</u>	<u>200</u>	<u>200</u>
<u>300</u>	<u>300</u>	<u>300</u>	<u>300</u>	<u>300</u>	<u>300</u>
<u>400</u>	<u>400</u>	<u>400</u>	<u>400</u>	<u>400</u>	<u>400</u>
<u>500</u>	<u>500</u>	<u>500</u>	<u>500</u>	<u>500</u>	<u>500</u>

HAZARD IDENTIFICATION

Exercise: What's wrong with these pictures?

Take a look at the photos below and discuss the actual or potential hazard you see. What kind of accident might result?.



What's the hazard?

What kind of accident might occur?

Discuss the hazards and the types of accidents that might occur. If you don't have the answers to these questions. Get into the rules and figure it out.



What's the hazard?

What kind of accident might occur?



What's the hazard?

What kind of accident might occur?

KAHOOT!360 TRAINING

Increase engagement and results with game-based training on any topic

Host Kahoot!360 via any video conferencing platform

Track progress, knowledge gaps, and participation in detailed reports