



MINING FOR THE FUTURE

MICHIGAN'S

aggregate industry is Mining for the Future! We source sand, gravel and limestone to fix our roads and build our schools, churches, hospitals, offices, and more. We are also sparking the redevelopment of mining sites into environmentally friendly uses, including lakes, farm land, solar farms, golf courses, wildlife preserves, and housing.

Our focus on future development means the land used for mining today will be reclaimed tomorrow, creating more uses and higher taxable value than it had originally. Check out some of the great redevelopment projects already taking place across our state!



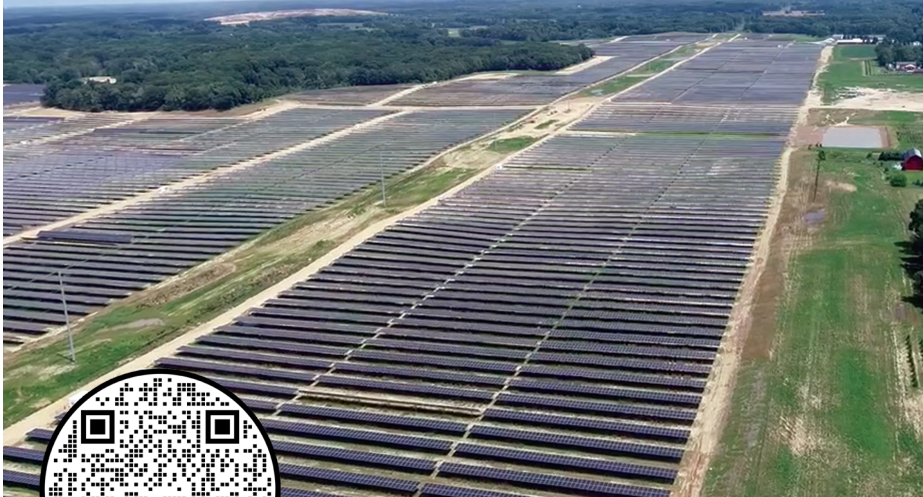
find out more

Use this QR code to use MAA's online resources.

mining for the future

Calhoun County

AGGREGATE INDUSTRIES



LOCATION: CONVIS & PENNFIELD TOWNSHIPS

RECLAMATION PROJECT: A.I. BATTLE CREEK SAND & GRAVEL, SMITH & CARR PROPERTIES RECLAMATION

A solar farm and agricultural property now sit on this reclaimed sand and gravel mine in Calhoun County. For about 30 years, the former Bill Smith Sand and Gravel mine supplied aggregate to many area paving and concrete projects. After about \$1 million in investments, Michigan's aggregate industry put this former mine to use in a way that benefits our environment and wildlife.



Clinton County

TA FORSBERG



LOCATION: WATERTOWN TOWNSHIP

RECLAMATION PROJECT: SPRINGBROOK LAKES SUBDIVISION

Springbrook Lakes subdivision, formerly a sand and gravel mine used by Spartan Asphalt to build local roads, driveways, and other infrastructure, now includes 190 homes sites with many surrounding outdoor activities. Well-maintained common areas, tennis courts and several bodies of water also sit on the reclaimed mining site, including a wildlife pond and seven-acre Springbrook Lake.



mining for the future

Clinton County

RIETH RILEY & TA FORSBERG



LOCATION: DEWITT TOWNSHIP

RECLAMATION PROJECT: LAKESIDE PRESERVE SUBDIVISION

Originally a sand and gravel mine operated by Rieth Riley, the Lakeside Preserve subdivision now includes walking trails, tennis and volleyball courts, in addition to a boat launch for kayaks and non-motorized water vehicles. The previous mining site now operates as a full-functioning neighborhood with 320 homes and three connected lakes due to Forsberg's partnership with Felski and DTN Management.



Clinton County

KESSLER & CARL SCHLEGEL, INC.



LOCATION: BATH TOWNSHIP

RECLAMATION PROJECT: HAWK HOLLOW GOLF COURSE

This massive mining reclamation project now features one of the Lansing-area's most popular golf courses, Hawk Hollow. The former sand and gravel mine today is a top recreational facility that includes conference and event buildings. Additionally, more than 30 homes have been developed so far.



mining for the future

mining for the future

Eaton County

CHENEY LIMESTONE



LOCATION: BELLEVUE TOWNSHIP
RECLAMATION PROJECT: LAKE
MATHEWSON, LAKE MCELMURRY, JONES
LAKE, CHENEY POND

The Cheney Limestone Quarry helped build important facilities like the GM Delta Plant, Fort Custer Training Center, Ionia State Prison, and Okemos High School. This ongoing reclamation now includes several homes in and around the resulting lakes. With \$7 million in reclamation investment so far, non-improved agricultural and wooded land has been turned into top-notch facilities, agricultural sites, waterfront property, homes and many other useful uses.



Eaton County

CRANDELL BROTHERS TRUCKING



LOCATION: EATON TOWNSHIP
RECLAMATION PROJECT: CRANDELL PARK

Crandell Park in Eaton County, Michigan, is a reclaimed sand and gravel mining site that now serves as a public recreation area. Once mined by the Crandell family, the land was restored to include a 160-acre lake used for fishing, kayaking, and wildlife habitat. The 400-acre park features trails and open green space, showcasing successful post-mining land use. It stands as a model of how aggregate mining can lead to long-term community and environmental benefits through responsible reclamation.



mining for the future

mining for the future

Gratiot County

HUBSCHER & SON, INC.



LOCATION: SUMNER, MI

RECLAMATION PROJECT: PAUL HUBSCHER COUNTY PARK

This parcel in Gratiot County served as a gravel mine for more than 30 years, providing raw materials for the county road commission and more. Later, the property was reclaimed as Paul Hubscher County Park after being donated to Isabella County. Today, county residents enjoy picnicking, swimming, fishing and camping at the park, where a man-made lake, 60 acres of open space and modern campsites are available.

Hubscher & Son Inc.

Ingham County

CHENEY GRAVEL COMPANY



LOCATION: HOLT

RECLAMATION PROJECT: WILLOUGHBY ESTATES

Completed in 2018, the Willoughby Estates consists of 269 units, which will accommodate 450 residents. Sitting on a former site of the Cheney Gravel Company, the complex consists of four different types of housing units in a rapidly growing part of the state. Mined for ten years, the aggregate from this site is believed to be used in the Lansing GM plants and multiple buildings on the Michigan State University campus. The reclamation project cost \$32 million.

CHENEY GRAVEL
COMPANY

mining for the future

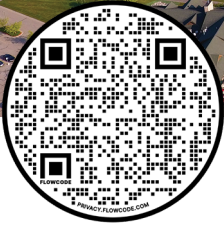
Isabella County

FISHER SAND & GRAVEL



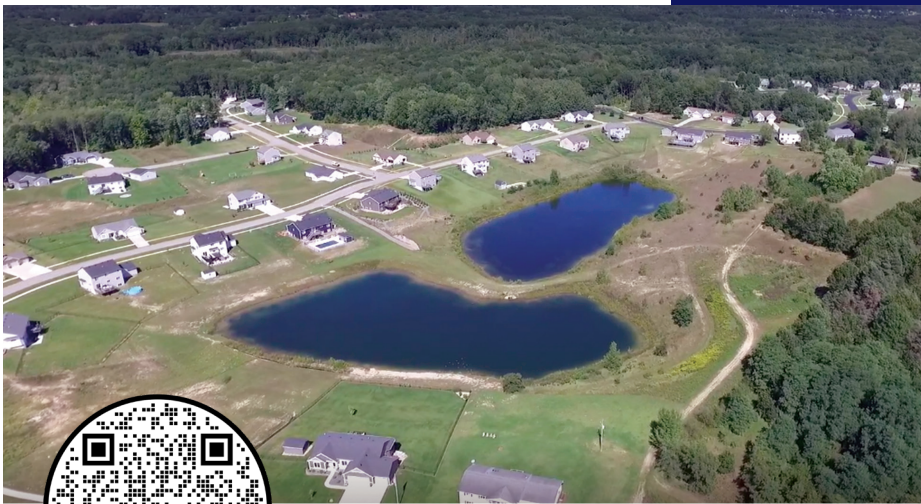
LOCATION: CHIPPEWA TOWNSHIP
RECLAMATION PROJECT: BUCKS RUN GOLF CLUB & HOMESITES

For decades this former Mid-Michigan sand and gravel mine enabled the construction of countless state and local infrastructure projects that includes the rebuilding and modernization of M-20, the key link between Mt. Pleasant and Midland. Today, approximately \$8 million has been invested in creating the Bucks Run Golf Club and Homesites reclamation project where up to 35 homesites will be developed.



Kent County

SABLE DEVELOPING, INC.



LOCATION: ALGOMA TOWNSHIP
RECLAMATION PROJECT: RIDGE WATER ESTATES

A former aggregate mine that supplied sand and gravel required for local roads and construction projects, reclamation at this location began in 2008. Today, a fully built out neighborhood of more than 75 family homes is helping ease Michigan's housing crunch at Algoma Township's Ridge Water Estates. This reclamation has increased the local tax base, added more kids to local schools and even generated approximately \$70,000-per-home in local wages during their construction phase.



Kent County

STONECO OF MICHIGAN



LOCATION: GAINES TOWNSHIP
RECLAMATION PROJECT: PRESERVATION LAKES

Beautiful brand-new homes adjoin new waterfront property in the ongoing reclamation of the former CRH sand and gravel mine in Kent County. Prior to starting reclamation in 2015, this site provided aggregate that was necessary for key MDOT road projects, including the M-6 freeway around southern Grand Rapids, US-131, reconstruction of 100th Street and the Preservation Lakes development itself.



Monroe County

STONECO OF MICHIGAN



LOCATION: OTTAWA LAKE
RECLAMATION PROJECT: WHITEFORD PARK

This former aggregate mine is now a popular county park. After mining operations ceased, the property was reclaimed and converted into the full-service Whiteford Park, to the benefit of area residents. With eight ball fields in operation, it regularly hosts recreational baseball and softball tournaments each summer. Other features include disc golf, soccer fields and pavilions, making this former mining facility a source of entertainment and memories for families.



Muskegon County

NUGENT SAND



LOCATION: NORTON SHORES

RECLAMATION PROJECT: DUNE HARBOR PARK

Dune Harbor Park, which served as a sand mining site operated by Nugent Sand from 1912 to 2017, has been transformed into Muskegon County's largest park with 377 acres of forested dunes and two lakes for fishing and kayaking. Prior to its reclamation, the land supplied sand for regional development. This project was propelled by land donations from the current land owners.



Oakland County

EDW. C. LEVY CO.



LOCATION: NOVI

RECLAMATION PROJECT: ISLAND LAKES OF NOVI

The Island Lakes reclamation project turned a sand and gravel mining site into 876 new homes and two schools, with new waterfront property which has generated higher taxable values. From about 1962 - 1990, this former Lyon Sand & Gravel mining site supplied aggregate to paving contractors, ready mix companies, asphalt suppliers and landscapers for many large MDOT road projects, commercial jobs and subdivisions. Today it is a thriving example of land that is more valuable after mining than before.



mining for the future

Oakland County

EDW. C. LEVY CO.



LOCATION: OXFORD TOWNSHIP
RECLAMATION PROJECT: WATERSTONE SUBDIVISION

The former sand and gravel mine operated by American Aggregates of Michigan from the 1950s to 1990s has been transformed into a vibrant community. Reclaimed in 1995, the 1,372-acre site now includes 1,246 residential units, 800 acres of open space, a 27-hole golf course, a shopping center, and miles of walkways. Extensive landscaping and new infrastructure make Waterstone a model of successful land reclamation.



Oakland County

TRI-CITY AGGREGATES



LOCATION: GROVELAND & HOLLY TOWNSHIPS
RECLAMATION PROJECT: HOLLY OAKS ORV PARK

Holly Oaks ORV Park, located near I-75 in southeast Michigan, was formerly mined by Tri-City Aggregates. In 2014, Oakland County and the Michigan DNR acquired the property with support from a state grant. The site's unique terrain made it ideal for off-road recreation. It was transformed into a public ORV park and officially opened in 2020.



mining for the future

Schoolcraft County

CARMEUSE



LOCATION: PORT INLAND DOLOMITE QUARRY
RECLAMATION PROJECT: PORT INLAND DOLOMITE QUARRY RECLAMATION

Formerly owned by Inland Steel, the Port Inland Dolomite Quarry reclamation project, located in Gulliver, Michigan, has been undergoing reclamation since 2002. The quarry helped to supply infrastructure construction projects for over 50 years, in addition to producing chemical grade limestone, high calcium lime, agricultural limestone and crushed limestone. This transformation has created over 100 acres of wetlands, with more to come as reclamation continues.



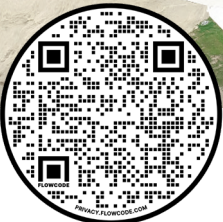
Washtenaw County

DOAN CO. & LESTER BROTHERS



LOCATION: MANCHESTER TOWNSHIP
RECLAMATION PROJECT: HIDDEN LAKES RV RESORT

The beautiful Hidden Lakes RV Resort wasn't always a 'walk in the park,' as it was once a fully functioning sand mine that contributed to concrete production for a variety of local projects. Doan Companies teamed up on the project with Lester Brothers, which is experienced in running RV parks. Today, Hidden Lakes has 51 RV sites, Wi-Fi, picnic tables, a clubhouse, kayaking and swimming in two lakes, pickleball courts and plans for a heated pool. [Read more about it here.](#)



mining for the future

Wayne County

THOMPSON SAND AND GRAVEL



LOCATION: NORTHVILLE TOWNSHIP
RECLAMATION PROJECT: STONEWATER

After the land was bought from farmers and used for mining purposes during most of the 20th century, Stonewater L.L.C., was formed to develop the 366 acres of land that eventually has become the Stonewater neighborhood. Following its completion, Stonewater's reclamation has transformed the area into what is now considered to be one of the most prestigious subdivisions in Northville. The development is home to six lakes, scenic bridges and pathways, and a collection of beautiful homes that have welcomed people from around the world to Wayne County.

Thompson
Sand & Gravel

mining for the future